



2021
MURRAY BRIDGE
102nd ANNUAL SHOW

ABN 11 686 674 167

PO Box 315, Murray Bridge SA 5253 Ph: (08) 8531 0248
Email: secretary@murraybridgeshow.com.au
Murray Bridge Showgrounds, 113 Old Princes Highway, Murray Bridge SA

25th September 2021



Section BA

ALL BREEDS BEEF CATTLE

Convenor: Daryl Llewellyn

Telephone: 0427 354 183

SECTION BA–ALL BREEDS BEEF CATTLE

Convenor: Daryl Llewellyn - 0427 354183 or Ph 08 85354183

Assistant Convenor: Kent Llewellyn - 0417 821 179

ENTRIES CLOSE 5PM FRIDAY 17 SEPTEMBER 2021 - NO LATE ENTRIES WILL BE ACCEPTED

Entries can be sent either to the Convenor or Secretary at PO Box 315, Murray Bridge, SA, 5253

Entry Fee: \$5 per class unless otherwise stated – all fees must accompany the entry forms

JUDGING TO COMMENCE AT 10:00AM SHARP – SATURDAY 25 SEPTEMBER 2021

PLEASE ENTER EARLY TO ALLOW TIME FOR MEMBERS TICKETS TO BE SENT TO EXHIBITORS

- a) It is compulsory that all livestock exhibitors be financial members of the MB A&H Society Inc.
- b) Cattle exhibitors must adhere to Johnes Guidelines as set by the MB A&H Society Inc.
- c) The minimum status required for exhibiting beef cattle at the MB A&H Society Inc. Show is **J-Bas 6**.
- d) Animals must be tested negative for Pestivirus.
- e) Exhibitors must include their accreditation certificate number on the entry form.
- f) Beef exhibitors must complete the herd health status declaration and return with entry form(s).
- g) All cattle must have NLIS tags and the Show Society Inspectors reserve the right to inspect animals for breed specifications and may exclude any animal from the judging if it does not meet specifications.
- h) Exhibitors are requested to bring their vehicles through gate 3 and use the 'Beef Only' loading and unloading facilities.
- i) Exhibitors must be bona fide owners or be able to provide lease/transfer papers.
- j) All entrants to be named and stud identification stated on entry forms.
- k) All cattle are to be registered in their respective societies herd books, including appendices and comply with Breed Society requirements.
- l) Ages for the classes to be taken from the 1st of September 2021.
- m) All cattle in group classes must be shown in their respective individual class.
- n) It is the responsibility of the exhibitor to see that cattle are entered and shown in the correct class.

An exhibitors' meeting will be held following the completion of the judging to determine any modifications required for the following show. All exhibitors and interested members of the public are invited to attend.

Prizes

First Voucher or \$10, Second \$5

No second prize money awarded unless three or more entries in the class.

Most Successful points are awarded as follows First 5 points, Second 3 points, Third 1 point.
In the event of a draw the winner will be decided by the amount of championship ribbons won

TROPHY DONORS

**The Murray Bridge A & H Society Inc. sincerely thanks our sponsors for their support of the
All Breeds Beef Cattle Section**

National Herd Development/Robertsons AI Services Murray Bridge – 08 8532 1392

Nutrien Ag Solutions Murray Bridge - 8532 2622

Daish Irrigation

Hills Farm Supplies – Mount Barker

DJ & JD Llewellyn, Lynonga Red Angus Stud, Mypolonga

Limitless Show Supplies

Thomas Foods International

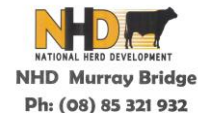
ALL BREEDS BEEF CATTLE COMPETITION HANDLERS CLASSIC

- 1 Handler's competition.
Open to any person of any age – Juniors and Seniors
The convenor reserves the right to split this class into more age specific divisions.
Entry in this class is FREE!!!



ALL BREEDS BEEF CATTLE COMPETITION – Age at 1st September 2021

- 2 Calf Classic – calf born in 2021 (Bull or Heifer)
- 3 Heifer under 12 months
- 4 Heifer 12 months – under 16 months
- 5 Heifer 16 months – under 20 months



Junior Champion Female from classes 3, 4 and 5

Reserve Junior Champion Female from classes 3, 4 and 5

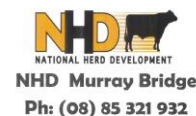
- 6 Female 20 months – under 24 months
- 7 Female 24 months – under 30 months
- 8 Female 30 months and over



Senior Champion Female from classes 6, 7 and 8

Reserve Champion Senior Female from classes 6, 7 and 8

- 9 Bull under 12 months
- 10 Bull 12 months – under 16 months
- 11 Bull 16 months – under 20 months



Junior Champion Bull from classes 9, 10 and 11

Reserve Junior Champion Bull from classes 9, 10 and 11

- 12 Bull 20 months – under 24 months
- 13 Bull 24 months – under 30 months
- 14 Bull 30 months and over



Senior Champion Bull from classes 12, 13 and 14

Reserve Champion Bull from classes 12, 13 and 14

Supreme Beef Exhibit

Champions from Junior Female and Junior Bull,
Senior Female and Senior Bull to compete

- 15 Pair of Bulls any age
- 16 Pair of Females any age
- 17 Breeders Group - group of 3 animals of both sexes, any age & any combination bred by the exhibitor
- 18 Pair - one male, one female any age



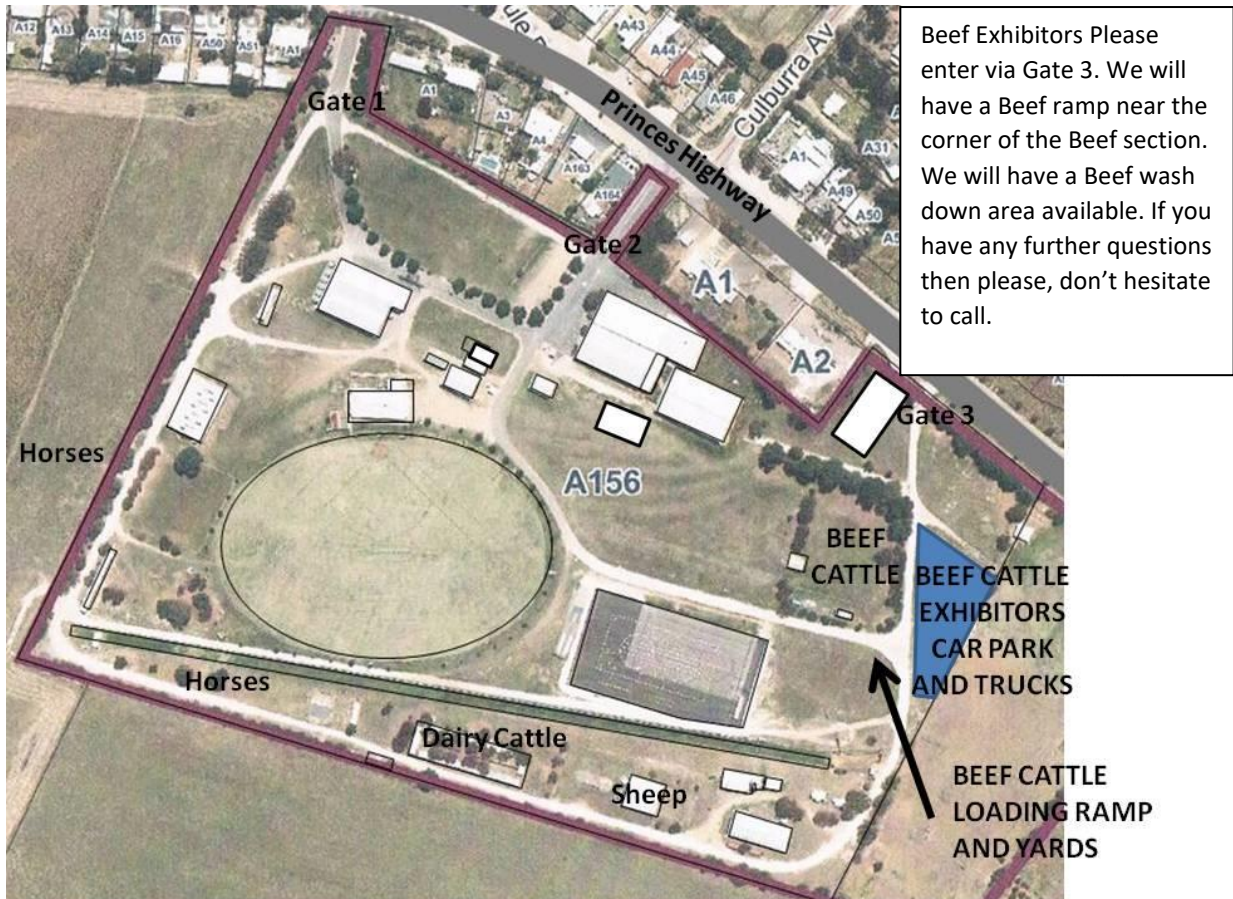
ALL BREEDS BEEF JUNIOR JUDGING COMPETITION

- 19 Junior Judging Competition.
Open to any person under 25yrs. School children are encouraged to enter.
The section convenor reserves the right to split this class into more age specific divisions.
Entries accepted with the section convenor on the day of the show.
Entry in this class is FREE!!!

Sponsored by DJ & JD Llewellyn

Most Successful Exhibitor from classes 2-17





SPONSORS

NHD MURRAY BRIDGE

NUTRIEN AG SOLUTIONS – MURRAY BRIDGE

HILLS FARM SUPPLIES – MOUNT BARKER

DAISH IRRIGATION & FODDER

LYNONGA RED ANGUS STUD

THOMAS FOODS INTERNATIONAL

LIMITLESS SHOW SUPPLIES

FARMER JOHNS – MURRAY BRIDGE



Electronic Entry Form available from

secretary@murraybridgeshow.com.au OR www.murraybridgeshow.com.au